

## Football Game Day Facility Policies

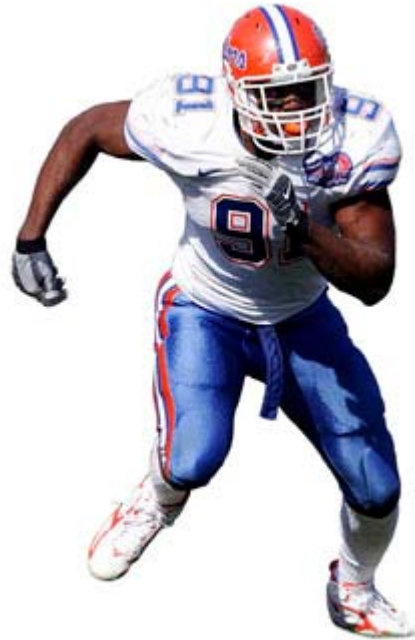
Ben Hill Griffin Stadium and Game Day Information/Policies

### GATOR FANS CODE OF CONDUCT

Gator fans are widely known for their enthusiasm, team support, hospitality and sportsmanship. Our image is shaped not only by our student-athletes, coaches, students and faculty, but by our fans as well. Our goal is to create a first-class environment to lend support to our team while maintaining a safe and fun atmosphere for visiting fans as well.

#### Prohibited Behavior

Rowdy, threatening, or inconsiderate behavior such as standing in the aisles, portals or concourses, profane and abusive language, smoking in prohibited areas, fighting, and drunkenness will not be tolerated and can result in ejection, arrest, and/or loss of season ticket privileges. Throwing of any objects in the stands, including paper and plastic cups will also be prohibited. Should you observe any of this disruptive behavior, please notify your nearest law enforcement officer. Standing on seats/bleachers is strictly prohibited.



**NCAA policy prevents fans from entering the field of play unless they are properly credentialed or accompanied by an authorized staff member.**

**Violators are subject to arrest.**

#### Enforcement

Individuals found violating any policies can be removed from the stadium. Non-students, while not affected by the Student Conduct Code, are subject to arrest and prosecution under applicable laws and state statutes. Offenders' names will be forwarded to the UAA by the law enforcement representative reporting the citation. The offender may be contacted by the UAA and issued a warning that a future violation could result in loss of ticket privileges. Season ticket holders are responsible for the behavior of anyone using their tickets and would be subject to this policy if the person using their ticket violates the Code of Conduct.

Students involved in such activities or other disruptive behavior will also be subject to disciplinary action through the Dean of Students Office and University of Florida's Code of Student Conduct. Students enjoy the rights and privileges that they gain as a member of the university community and are subject to the responsibilities which accompany that membership.

The University Athletic Association reserves the right to remove the ticket holder from the premises if in the sole opinion of the security personnel his or her conduct endangers or disrupts the players, coaches, officials or fans. Gator Athletics thanks you for your support.

### **Stadium Re-entry Policy**

Fans are not permitted to leave and re-enter Ben Hill Griffin Stadium once their game ticket has been torn. Should a medical emergency arise requiring you leave the stadium, you must report to the East or West first aid station to receive an emergency medical pass to re-enter the stadium. In the event of severe weather delay in the game, fans will be allowed to exit the seating areas to seek shelter inside the concourse, on the plaza, and outside the stadium. Fans will be readmitted at the restart of the game with their ticket stubs. Should you have any questions regarding this policy, contact the University Athletic Association at 352-375-4683.

### **Prohibited Items**

Food/drink containers, bottles, cans, thermoses ice bags, ice chests, any artificial noise making device, flags, weapons, umbrellas, strollers, back packs, carry bags, video cameras/cases or any items deemed hazardous by game management personnel will not be allowed in the stadium. Law enforcement officials have the right to inspect any item at any time for the purpose of spectator safety.

- There are no provisions to check items at the gates.
- Alcoholic beverages are strictly prohibited.
- Chairbacks larger than a single seat are prohibited.

Ben Hill Griffin Stadium will be secured beginning Thursday night prior to every home game. Access will be restricted to authorized personnel only from this time until the end of the game and all vehicular traffic will be prohibited.

### **Announcements**

Stadium PA will be used only in the event of medical emergencies. Announcements must be cleared through the stadium operations at 375-GoUF.

### **Gate Information**

All gates open 90 minutes prior to kickoff. It is to your advantage to enter the stadium early to avoid delays.

### **Ticket Will Call**

Will Call is located at the west side ticket office near the skybox entrance.

### **Banner Policy**

- All banners must be in good taste, and not contain any grotesque or suggestive expressions that reflect negatively upon the University of Florida.
- Banners cannot cover existing signs inside of the stadium: e.g., "This is Gator Country".
- Banners are not permitted on the overhang areas in the North and South End Zone.
- Flags, banners, poles will not be allowed in the seating area of the stadium.

## **STUDENTS**

Tickets

All student tickets will require a current Gator One Student identification card be presented for admittance.

## Bloc Seating

Students are reminded that the bloc seating arrangement in the stadium is analyzed each game. Locations of each group assigned to this privilege is recorded and distributed to game management personnel.

Failure to comply with stadium policy could result in the eliminations of bloc seating.

**REMEMBER** – Treat others as you would expect to be treated.

## Lost and Found Information

Lost and found articles should be reported or turned in to the Guest Services desk between Gates 1 and Gates 2 on west side of the stadium.

## Gator SportShops and Souvenir Stands

There are two Gator SportShops located in the stadium which are open on game day. They are located in the North End Zone next to Gate 8, and in the South End Zone next to Gate 18. Gator souvenir stands are located throughout the main concourse areas of the stadium, and feature various items available at the Gator SportShops.

## Disabled Services

Wheelchair seating is designated in the North and South End Zones on the lower concourse level and in areas throughout the skyboxes. Contact the UAA Ticket Office for information at (352) 375- GoUF or 800-34-GATOR (Fla. only).

## First Aid Stations

### Locations

- **South End Zone** - 2nd level concourse behind Section 53
- **North End Zone** - Centrally located on each level
- **East Stands** - Lower concourse between Gates 13 and 14
- **West Stands** - Lower concourse inside Gate 2
- **Skyboxes** - South end of Champions Club level

Physicians and emergency medical personnel are available at the First Aid Stations to respond to any emergency medical needs.

## Gator Sportshops

- North End Zone inside Gate 9
- South End Zone inside Gate 18.

Gator souvenir stands are located throughout the main concourse areas of the stadium, and feature additional items not available at the Sportshops.

## Automated Teller Machines

- SunTrust ATM at Gate 8 & Gate 18
- Additional ATM's are located at Gate 3,7,12,15,18 and NEZ5

### **Guest Services**

The game day staff is ready to assist Gator fans with information, directions, lost and found items, lost children, emergency paging and other services. The Guest Services desk is located at the UAA Switchboard between Gates 1 and Gates 2 on the west side of the stadium. Guest services kiosks are located inside Gates 2, 7 and 16.

### **Open Container Law**

It is prohibited to consume or possess any alcoholic beverage in an open container on any public street, sidewalk, public parking facility or private property when the owner has not given consent to consume alcohol or have an open container on the property. The law includes consuming or possessing alcoholic beverages in or around Ben Hill Griffin Stadium.

### **Smoking Policy**

Smoking is prohibited in all areas of Ben Hill Griffin Stadium with the exception of the designated smoking areas located in the North and South End Zones.

### **Water Fountains**

For fan comfort, there are over one-hundred (100) water fountains available throughout Ben Hill Griffin Stadium. Please remember to drink plenty of fluids.